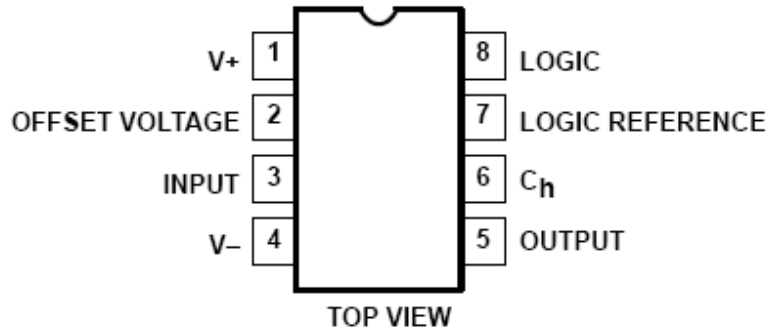
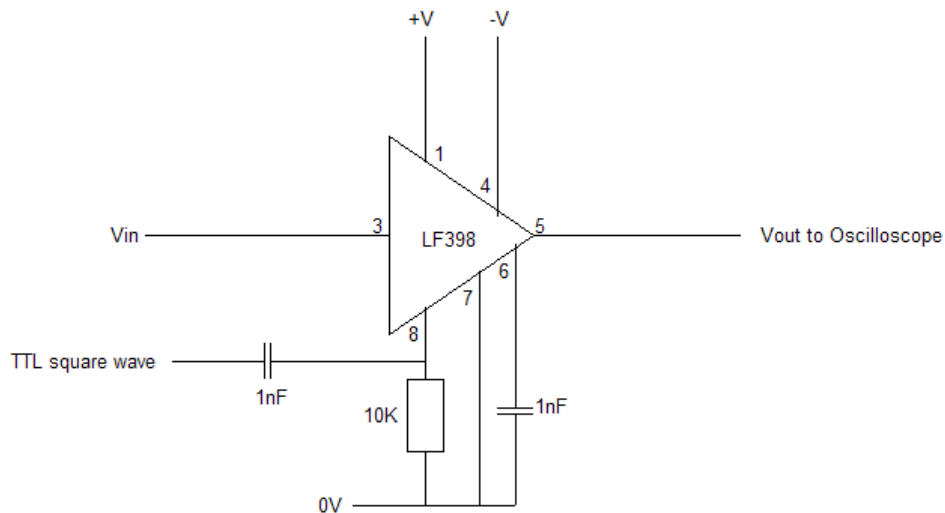


Pulse Amplitude Modulation practical

A sample and hold chip is to produce a PAM signal. The chip we use is a LF398



Build the circuit in the diagram below



Connect a signal generator to the V_{in} of the circuit and the Channel 1 of the oscilloscope, set the signal generator to produce a sine wave at about 100Hz. Connect V_{out} to Channel 2 of the oscilloscope. Connect the TTL output of a second signal generator to the TTL square wave connection and adjust the frequency to 1kHz.

- Compare the input with the output.
- Adjust the frequency of the square and see what difference it makes to the output wave. What is the lowest frequency of square wave you can use to still get the correct output frequency?
- Try adjusting the frequency, size and shape of the input wave